

Find the right product for your best friend

j/d™

- For dogs with arthritis
- Clinically proven nutrition to support your dog's ability to run, climb and jump again in as little as 21 days¹⁻⁴



Metabolic+Mobility

- For overweight dogs with arthritis
- Clinically proven nutrition to improve mobility in 21 days¹⁻⁴ and reduce weight by 13% in 60 days⁵
- Clinically proven nutrition to avoid weight regain after weight loss⁵



¹Fritsch D, Allen TA, Dodd CE, et al. Dose-titration effects of fish oil omega-3 fatty acids in osteoarthritic dogs. Unpublished. ²Fritsch DA, Allen TA, Dodd CE et al. J Am Vet Med Assoc 2010;236:535-539. ³Roush JK, Dodd CE, Fritsch DA et al. J Am Vet Med Assoc 2010;236:59-66. ⁴Roush JK, Cross AR, Renberg WC et al. J Am Vet Med Assoc 2010;236:67-73. ⁵Floerchinger AM, Jackson MI, Jewell DE, et al. Effect of feeding a weight loss food beyond a caloric restriction period on body composition and resistance to weight gain in dogs. J Am Vet Med Assoc 2015;247:375-384. ⁶Jacob F, Osborne C, Polzin D. Effect of dietary modification on health-related quality of life (HRQL) in dogs. J Am Vet Med Assoc, 2002.

k/d™+Mobility

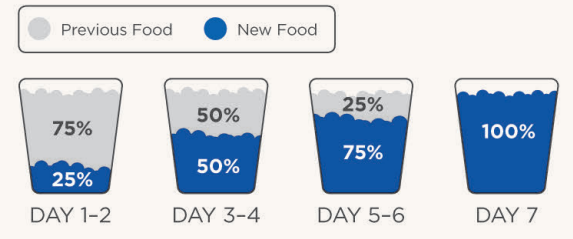
- For dogs with arthritis and kidney disease
- Clinically proven nutrition to support your dog's ability to run, climb and jump again in as little as 21 days¹
- Clinically proven nutrition to support kidney health and a longer, better quality life⁶
- Promotes vital kidney and heart function



Your vet may recommend a different Hill's™ Prescription Diet™ food, depending on your pet's condition



How to introduce the new food



- Gradually mix the new food with your pet's current food in increasing amounts for at least 7 days, until only the new food is being fed
- Always refer to the feeding guide on the pack
- Have your veterinarian monitor your pet's condition

Want the best for your pet? Speak to your vet

Ask about j/d and help your best friend walk, run, jump and play more easily in just 21 days!



For more information about Hill's™ Prescription Diet™ j/d™ go to HillsPet.com.au or contact the Hills HelpLine 1800 679 932

[™]Trademarks owned by Hill's Pet Nutrition, Inc. ©2018 Hill's Pet Nutrition Pty Limited. HIMA-HB-1883C73E



BACK TO Play IN 21 DAYS



ARTHRITIS MANAGEMENT

Get your best friend moving again with the nutritional support of Hill's™ Prescription Diet™ j/d™

What is arthritis?

When your dog is suffering from arthritis, it means the cartilage in their joints is wearing away faster than it is being replaced, which may make their joints stiff, decrease their mobility and cause them significant pain.

Signs of arthritis in dogs:

- Walking **stiffly or limping**
- **Hesitates** to go up and down stairs
- **Lags** behind and **tires** easily
- **Prefers to lie down** rather than sit
- **Growls or whimpers** when affected area is touched

Risk factors

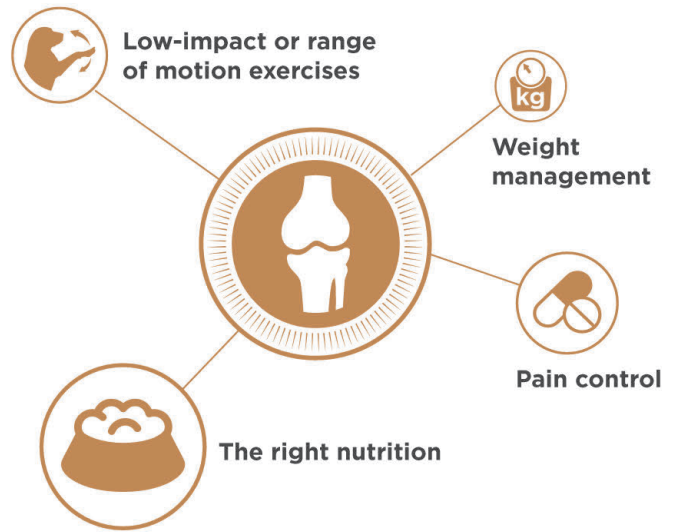
- Age**
- Excess weight**
- Accident or trauma**
- Breed or genetic predisposition**



Nutrition can make all the difference

Arthritis isn't curable, but the good news for your best friend is that it's manageable.

Your vet will often recommend a combination of treatments as the most effective way to manage your dog's condition. While exercise, weight management and medication can help, diet and nutrition play a crucial role in managing arthritis.



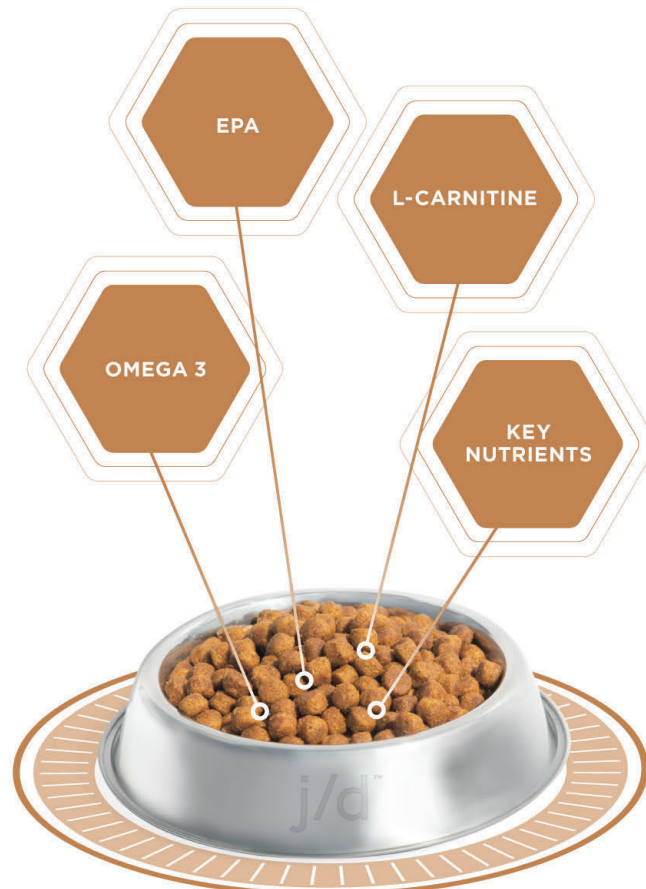
Feeding your dog the right combination of nutrients and fatty acids clinically formulated in j/d helps to preserve healthy cartilage, reduce inflammation, ease aching joints, improve mobility and reduce stiffness. In fact, j/d is proven to help your dog walk, run and jump more easily in just 21 days.¹⁻⁴



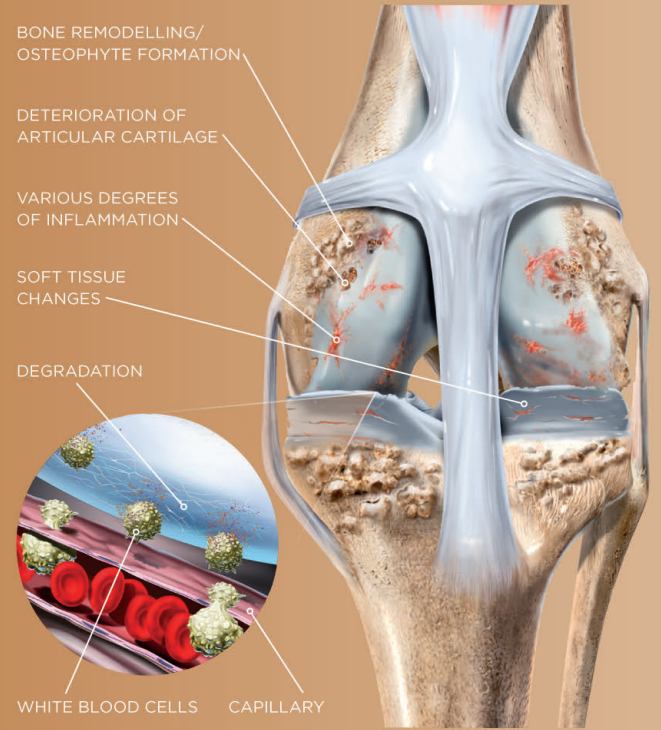
Day 1 → Day 21

Why is j/d so effective?

- High levels of **omega-3 fatty acids** help to reduce inflammation and ease aching joints
- A combination of **key nutrients** help maintain healthy cartilage
- **EPA** (Eicosapentaenoic Acid) an omega-3 fatty acid, blocks cartilage attacking enzymes
- L-Carnitine, an amino acid, helps to **maintain a healthy weight**, reducing stress on joints
- Suitable for **long-term feeding** to adult and mature dogs



Unhealthy joint



Healthy joint

